

**AN INTRODUCTION
TO COBNOR
ACTIVITIES CENTRE
TRUST ...**

**... YOUR
ADVENTURE
STARTS HERE**

EDUCATIONAL
EXPERIENCES TO INSPIRE
IN A BEAUTIFUL AND
UNIQUE ENVIRONMENT



**LEARNING
OUTSIDE
THE
CLASSROOM**



**RESIDENTIAL
AND
DAY TRIPS
FOR SCHOOLS
AND
FURTHER
EDUCATION**

WHY CHOOSE COBNOR ACTIVITIES CENTRE TRUST?

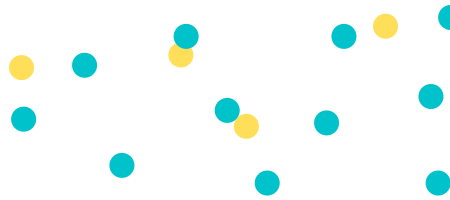
**MAKING LIFE BETTER
FOR EVERYONE**

**BOTH ON AND
OFF THE WATER**

With the ability to accommodate 80 people on site, we can offer a bespoke programme to achieve your specified learning outcomes, whilst maintaining safety and enjoyment for all.

**LOCATED IN BEAUTIFUL
CHICHESTER HARBOUR**

An Area of Outstanding Natural Beauty (AONB) and with the South Downs National Park on our doorstep, this allows us to offer a rich mix of both water-based and land-based activities, which enable people to thrive.



**EXPERIENCED,
LONG-STANDING,
HIGHLY QUALIFIED
PROFESSIONAL
STAFF**

Dedicated to the Trust and its valued customers, regular customers will always see a familiar face

**WE UNDERSTAND
THE POSITIVE IMPACT OF
THE NATURAL
ENVIRONMENT**

- Short to long term educational & development programmes, complementing your formal curriculum & timetable
- Reinforce a positive and focused attitude towards key personal and social skills
- We recognise the fundamental abilities within every young person, to enable them to achieve their full potential





• HOW CHILDREN BENEFIT

ENRICHED CURRICULUM

Linked to learning outcomes

IMPROVED CONFIDENCE

Leading to better behaviour & trust in each other

PERSONAL & SOCIAL DEVELOPMENT

WE CREATE

A positive environment for developing teacher-pupil relationships

A POWERFUL, POSITIVE TEACHING TOOL

Learning outside the classroom helps to enhance the social, personal and emotional development of your pupils (and teachers!) and can contribute much to the quality and depth of learning

WHY CHOOSE A SCHOOL TRIP?

Outdoor residential experiences provide a great alternative learning environment for pupils to succeed and thrive out of the classroom and experience many challenging activities in an informal and inclusive learning environment.

Our activities enable individuals to build personal skills such as..

- Resilience
- Self-confidence
- Promote mental health and positive well-being
- Problem solving
- Social interaction



WHO WE ARE

AN INDEPENDENT CHARITY

Based in Chichester Harbour, an Area of Outstanding Natural Beauty (AONB). Our purpose is to provide high quality outdoor experiences to make life better for everyone - and in particular for young people - both on and off the water.

ACCREDITED AND LICENSED TRAINING CENTRE



OUR HISTORY

Youth sailing at Cobnor began in the mid 1950s, thanks to **Martin Beale OBE JP DL**. Martin appreciated that he lived in a very beautiful area and was willing to share the uniqueness of Cobnor and Chichester Harbour with those less fortunate than himself.

In 1963 the Thames Barge, *Pride of Sheppy*, arrived on site and this brought the advent of residential courses at Cobnor.

"We love Cobnor! Friendly staff, great facilities and a fantastic location. Our children (and staff!) always have a wonderful time and it's the reason we come back every year"

Matt Forbes
Teacher at Churchers College



In 1979 Cobnor Activities Centre Trust was formed.

In 2013 Cobnor Activities Centre became wholly independent.



WE EMPLOY THE BEST IN THE BUSINESS

All our experienced staff are highly qualified in their area of specialty in outdoor activities. We are proud of our staff team, 70% of whom have been with us for three years or more, and many for much longer, so you will always see some familiar faces. Our staff have undergone an enhanced Disclosure and Barring Service check, together with site specific induction and training.

OUR TEAM CARES ABOUT YOU

We support our teachers throughout their experience and booking process. You will talk to someone who cares ...
...and who can make changes if they are needed.

SUPPORTED BY A PROFESSIONAL TEAM

Our staff will guide you through every step of your visit, supporting the planning and booking stages, as well as your on-site visit to the Centre. Groups will be greeted at the beginning and end of every day by a senior member of the activity team, assigned to you for the duration of your stay. Our admin team work closely with both you and the activity team, to ensure that you have a memorable experience. They are on hand throughout the day, to ensure your booking goes smoothly from start to finish.



LINKING YOUR LEARNING OUTCOMES TO OUR ACTIVITIES... ... AND HAVING FUN OUTSIDE

WE'VE DONE THE HARD WORK FOR YOU

We have defined the potential learning outcomes for each activity included in your bespoke programme. Tell us the learning outcomes you wish to achieve and we will help you get there.

PROMOTE A HEALTHY LIFESTYLE

**ACCREDITED SAILING &
PADDLESPORTS COURSES**

DINGHY & KEELBOAT SAILING

CANOEING & KAYAKING

IMPROVISED RAFTING

CYCLING SKILLS

ARCHERY

LOW ROPES

PROBLEM SOLVING

CLIMBING WALL

ORIENTEERING

INITIATIVE EXERCISES

AEROBALL

BUSH CRAFT

BEACH COMBING



COMPELLING LEARNING EXPERIENCES

We understand all activities should have a clear link to the wider curriculum and should contribute to enabling young people to become successful learners and confident individuals

CRITICAL THINKING :
OVERCOMING RISK :
COMMUNICATION SKILLS : RESILIENCE :
SELF ESTEEM : CREATIVITY :
LEADERSHIP SKILLS : TEAMWORK :
LIFELONG SKILLS : MOTOR SKILLS :
SUPPORTING CONCENTRATION :
NEW ENVIRONMENTS : SOLVING
PROBLEMS : NATURE & WILDLIFE :

HOW WILL IT LOOK?



"I would like to thank you for over lovely, delicious food and drinks because it was the best and drinks ever. I would also like to thank you for teaching us to do archery, rock climbing and all of the other activities!"

Pupil at Westbourne Primary School, July 2023

EXAMPLE 5-DAY RESIDENTIAL

MONDAY	Group 1	Group 2	Group 3	Group 4
1045 - 1100	ARRIVAL AND INDUCTION			
1230 - 1315	LUNCH			
13.15-14.45	Low Ropes	Orienteering	Canoeing	Canoeing
14.45-15.00	BREAK			
15.00-16.30	Climbing	Low Ropes	Kayak	Kayak
Tuesday	Group 1	Group 2	Group 3	Group 4
0915-1045	Problem Solving	Climbing	Low Ropes	Orienteering
1045 - 1100	BREAK			
1100 - 1230	Orienteering	Problem Solving	Climbing	Low Ropes
1230 - 1315	LUNCH			
13.15-14.45	Canoeing	Canoeing	Problem Solving	Climbing
14.45-15.00	BREAK			
15.00-16.30	Kayak	Kayak	Orienteering	Problem Solving
Wednesday	Group 1	Group 2	Group 3	Group 4
0915-1045	Sailing	Sailing	Archery	Aeroball
1045 - 1100	BREAK			
1100 - 1230	Sailing	Sailing	Aeroball	Archery
1230 - 1315	LUNCH			
13.15-14.45	Archery	Aeroball	Sailing	Sailing
14.45-15.00	BREAK			
15.00-16.30	Aeroball	Archery	Sailing	Sailing
Thursday	Group 1	Group 2	Group 3	Group 4
0915-1045	Cycling Skills	Beach Combing	Initiative Games	Bushcraft
1045 - 1100	BREAK			
1100 - 1230	Bushcraft	Cycling Skills	Beach Combing	Initiative Games
1230 - 1315	LUNCH			
13.15-14.45	Initiative Games	Bushcraft	Cycling Skills	Beach Combing
14.45-15.00	BREAK			
15.00-16.30	Beach Combing	Initiative Games	Bushcraft	Cycling Skills
Friday	Group 1	Group 2	Group 3	Group 4
0915-1045	Raft build	Raft build	Raft build	Raft build
1045 - 1100	BREAK			
1100 - 1230	Raft Race	Raft Race	Raft Race	Raft Race
1230 - 1315	LUNCH AND DEPART			

“THE CHOICE IS YOURS ...

3 DAY RESIDENTIAL

DAY TRIP

We can offer an ALL-THE-YEAR-ROUND activity programme, with REDUCED PRICES during the Autumn and Winter months. Talk to our office team for further details.

“Thank you for running such a brilliant day for us. I can’t think of my best bit, as the whole day was just fantastic!”

Pupil at Boxgrove Primary C of E

COME AND SEE FOR YOURSELF

FAMILIARISATION & PREVIEW VISITS FOR TEACHERS

The best way to appreciate what we have to offer is to come and see for yourself. We will be delighted to show you and your team around and discuss a bespoke programme for your group, at a time to suit you.

- Appreciate our stunning & unique location
- [View the accommodation and facilities](#)
- See some of the activities at first hand!

**MAKING LIFE BETTER FOR EVERYONE
BOTH ON AND OFF THE WATER**

WHAT'S INCLUDED

- All activities on your agreed programme
- All accommodation
- 3 meals a day, starting with Supper on Day 1 and ending with packed lunch on your last day (Cooked breakfast, packed lunch, hot evening meal, breaks including home made cake and fresh fruit)

ASSISTING YOUR PLANNING

We recognise the need for visiting groups to assure themselves of the **quality and safety of our outdoor activity provision**. Our risk assessments and safety management systems meet both National Governing Bodies' and statutory codes of practice. You will have access to our **RISK ASSESSMENT SUMMARY** document, which provides all the information **IN ONE PLACE** for local authority and management approval.

- Quality assurance schemes
- Risk assessments
- Fire and food safety
- Defined responsibilities of each party

OUR CUSTOMER SERVICE TO YOU

- PREVIEW VISIT FOR YOUR TEAM
- RECOGNISED BY LOCAL AUTHORITIES AND COUNTY COUNCILS FOR THE PROVISION OF OUTDOOR EDUCATION AND ADVENTUROUS ACTIVITIES
- SUPPORTING DOCUMENTATION TO ENABLE YOU TO FULFILL BOTH YOUR IN-HOUSE AND LOCAL AUTHORITY APPROVAL PROCESSES
- PARENTS' BROCHURE EXPLAINS SIMPLY AND CLEARLY THE REASON FOR THE TRIP AND HOW IT WILL WORK
- SENIOR MANAGER WILL ATTEND YOUR PARENTS' EVENING - EITHER IN PERSON, OR BY LIVE VIDEO LINK
- EASY TO UNDERSTAND BOOKING PROCESS THAT WE WILL MANAGE WITH YOU
- ONE MEMBER OF STAFF GOES FREE WITH EVERY 11 PUPILS
- DAILY DE-BRIEF WITH SENIOR STAFF WHEN YOU ARE HERE



FOOD

- Professional kitchen
- Fresh, tasty & nutritious meals, cooked from scratch on site for a healthy, active lifestyle
- Special dietary requirements catered for
- Top 5 Rating from Food Standards Agency

ACCOMMODATION

**LOG CABIN,
JUBILEE
OR
CAMPING**

**SOLE OCCUPANCY,
SAFE WARM &
COMFORTABLE**

Schools will have their own accommodation and will not share with other schools. We are situated in a private property, accessed at the end of a private drive.



Log cabin sleeps 42 :

5 cabins of 4 bunks; 2 dormitories of 8 bunks; Mess hall; drying room; professional kitchen

Jubilee sleeps 20 :

Cabins of 2 bunks; 4 bunks; 6 bunks and 8 bunks

Outside terrace, fully equipped kitchen



**LOG CABIN STAFF
EN-SUITE FACILITIES**

2 staff rooms (sleep 2 in each) with shower and toilet

CONTACT US

EMAIL

sail@cobnor.com

TELEPHONE

01243 572791

WEBSITE

cobnor.com

WHERE WE ARE

Cobnor Point, Chidham
Chichester, West Sussex
PO18 8TE



OUR STUNNING LOCATION

